

Student HANDBOOK

2011-2012

LONDON CHRISTIAN ELEMENTARY SCHOOL
202 CLARKE ROAD
LONDON, ONTARIO
N5W 5E4

PHONE 519 - 455 - 0360
FAX 519 - 455 - 6717
www.londonchristian.ca



London
Christian
Elementary
School

Table of Contents

Message from the Principal.....	3
Vision and Mission Statements.....	4
Our Purpose.....	4
Our Values.....	5
Things You Should Know About LCES.....	6
Christian Discipleship at LCES.....	7
The School Day	8-9
School Policies and Procedures.....	10
General Code of Conduct	11-12
Health Issues.....	13
Dress Code.....	14
Transportation.....	15
Events and Places	16-17
Miscellaneous	18-19
Reporting Student Progress.....	20
The Staff	21
Notes.....	22

Please note:



LCES is a nut-free school. Please take care when packing lunches that all items do not contain nuts or traces of nuts.

When you leave home in the morning, please also make sure that your teeth are brushed and your hands washed so that nut oils cannot be transmitted from your home.

Thank you for helping make LCES a safer place for all students.

A MESSAGE FROM THE PRINCIPAL

Dear Students:

Welcome to London Christian Elementary School!

A new school year is an exciting time of new opportunities, changes, and challenges. If you are new to LCES, a special welcome goes out to you! I hope that you will soon feel comfortable in the school community, and that you will quickly come to know what a special place LCES can be. You probably have lots of questions and maybe even a few concerns. There are lots of caring people here to help you out!

This Student Handbook is designed to help you to become more familiar with LCES and the expectations that the staff has of you as students. Your teacher will no doubt spend time in class going over the contents of this handbook. You are expected to know and follow the procedures and rules that are explained here. If there is information that you do not understand or if you have questions about anything, please feel free to talk to your teacher.

LCES is a Christian community. This means that each one of us has the opportunity *and* the responsibility to reflect God's love in everything that we say and do. The way in which we treat each other speaks volumes about what kind of a community we are. I challenge each one of you to think and act in ways that will demonstrate this as we use our God-given talents.

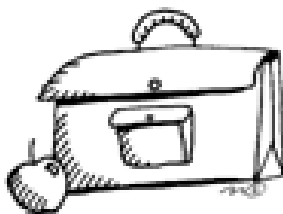
"Be strong and courageous. God is with you" (Joshua 1:9) is our school theme for this year. May we learn and be challenged in what it means to truly love and serve each other, to step out in faith because God is with us.

Have a blessed school year. May you walk closely with God and grow in his love.

In Christ,

Mrs. Haven

Principal





Our Vision (Why the school exists)

To educate children, equipping them for a life of faithful, Christian discipleship.

Our Mission (Our function, or our task)

London Christian Elementary School is an interdenominational Christian School established for parents seeking to provide their children with a Christ-centered elementary education. Empowered by the Holy Spirit and partnering with the home and the church, the school aims to educate children in a vibrant and creative environment, enabling them to grow in their understanding of God and His world, equipping them for discipleship in all areas of life.

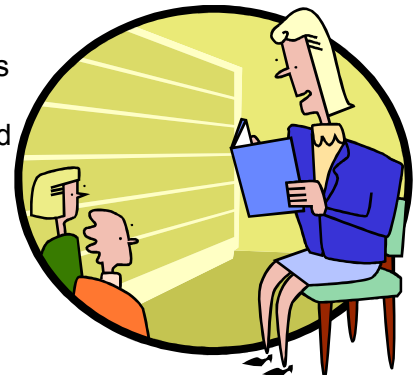
The school recognizes the unique giftedness of every student and respects each child as an image-bearer of God. Therefore, the school strives to develop the individual talents and abilities of all students for the purpose of building Christ's community.

As dedicated professionals and servants of Christ, the staff is committed to pursuing excellence within a caring educational environment. Through the curriculum teachers encourage students to explore Creation, to reflect on its wonder and brokenness, and to make responsible choices with the gifts God has given them.

Our Purpose (What we are committed to helping you learn at LCES)

Our goal is to work with parents to encourage their children to be faithful Christian disciples. We do this by assisting students in developing:

- Their knowledge and understanding of God and his world, equipping them for lives of love and service in all areas of life
- A personal commitment to Jesus Christ as Lord and Saviour
- A commitment towards joyful service to God and one's neighbour
- A personal responsibility of individual talents and abilities
- A healthy self-esteem as a child of God
- Positive and caring relationships with fellow students and teachers



Our Values– (What we believe)



Our Faith

- God is the creator of all that exists. He sustains, rules, and actively upholds all that He has made.
- Sin entered the world through our disobedience. God, because of his infinite love for us sent his only Son, Jesus Christ, to live among us and to die on the cross in order that all who believe in Him might live.
- The Bible is the inspired Word of God; it is the story of God's relationship with his people and the world. Through Scripture we grow in our knowledge of God.
- The Holy Spirit works in our hearts and minds that we might live joyful lives of praise to God.

The Child

- Children are gifts from God and are loved, nourished, and respected as image bearers of God.
- Each child is a unique part of God's creation. All children have been given gifts and talents, which will be nurtured as they serve God and others.

The School



- The school is a community of learners brought together by the common love of Christ. His presence guides the life of the school.
- Through the curriculum the majesty of God is revealed. Children are led to discover how wonderfully and intricately God created the world and how he cares for and sustains it.
- Curriculum is integrated with our faith in Christ. It is both challenging and demanding, and meets the needs of students at their various levels of ability.
- Teachers and staff are dedicated and qualified professionals, believers in Christ, and are committed to providing a caring and challenging environment for learning.

The School Community

- Supporters of LCES are believers in Christ, interdenominational in background, and are committed to Christian education.
- The school, the church, and the home form a vital partnership in the development of a child's life.
- Members support the school through prayer, financial support, and participation in the life of the school.

Our World

- The world belongs to God. In spite of sin it remains a place filled with wonder, and constantly reflects God's amazing grace.
- Christians have a responsibility to become fully engaged in this world, using their talents to unfold, to explore, and to discover all that God has made.
- As ambassadors of Christ we are to hold Him as a light in this world, to love and to serve Him, and to give God the glory.

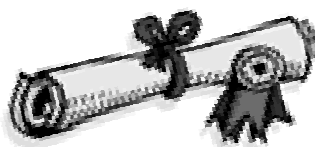
FACTS YOU SHOULD KNOW ABOUT YOUR SCHOOL



- London Christian Elementary School is an independent Christian elementary school. This means it is not a public school that is run by the Ontario Ministry of Education. LCES receives all its funds from parents who pay tuition and from people who care very much about Christian education.
- The school board helps to make decisions about the school. These decisions could such things as finances for the school, the building, or policies that the school follows. Some of your parents may be on the board. Other people who serve on the board are people in the Christian school community. The board reports to the London Christian Elementary School Society, which is everyone who sends their children to this school, and also anyone who is a member of the school society.
- LCES is not the only Christian school in Ontario. There are over 70 schools and over 10,000 students who attend Christian schools in Ontario, with over 700 teachers who teach these students! All 70 schools are part of the Ontario Alliance of Christian Schools, or the OACS. Some of the OACS schools around London are in Woodstock, Strathroy, Aylmer, St.Thomas and Clinton, as well as another school (Christian Academy) in London. These area schools are called the Woodstock District of OACS. You may very well get to know a few of the students in these schools, since we compete against them in our sports program.
- You will probably see the initials “OACS” on many papers that your teacher gives you during the year. That’s because the OACS helps teachers to write much of the curriculum that you are taught at this school. The aim of the curriculum at LCES is to help you understand the world in which we live, so that you may respond obediently to God’s call of service and discipleship. Teachers use a variety of curriculum series, textbooks, unit studies and other resources, and many of these come from the OACS.

London District Christian High School...

When you graduate from LCES, we strongly encourage you and your parents to consider continuing your education at London District Christian Secondary School, or LDCSS. The Christian High School is also part of the Ontario Alliance of Christian Schools, and is also committed to guiding you to a closer walk with the Lord in your teenage years.



CHRISTIAN DISCIPLESHIP AT LCES

As students and teachers in a Christian school, we acknowledge that Jesus Christ is the Lord of all of our lives. Therefore, we want our behaviour and attitudes to be guided by Jesus' command to love God above all and to love our neighbour as ourselves. Christ Jesus Himself will help us to show the fruits of His Spirit in our school life together, both in the classroom and on the playground. We pray that He will help us to show our love for Him in our relationship with God and with each other.

In loving and obeying God, we pray for his Spirit to help us:

- Speak respectfully about God always and never use His name carelessly. God is holy.
- Ask forgiveness for our sins. Our God is a forgiving God.
- Exercise self-control in our words and actions. We are called to love one another.
- Do our schoolwork faithfully. We are to make good use of the talents and abilities God has given each one of us.

In loving and serving one another, we pray for his Spirit to help us:

- Speak and act kindly to each other. Every one is made in God's image.
- Help others whenever we can. Whatever we do for others, we do for the Lord Jesus.
- Encourage each other to give our best effort. We are to build each other up in love.
- Use school property, our own possessions and those of others, with care and respect. All that we have is a gift from God.
- Be patient and considerate with each other, even when we think we can do better ourselves. God has given each of us different abilities.
- Pray for each other, and with each other. We are the body of Christ.

...Love the Lord your God with all your heart and with all your soul and with all your mind. And love your neighbour as yourself... Matthew 22:37



...But the fruit of the Spirit is love, joy, peace, patience, kindness, goodness, faithfulness, gentleness and self-control... Galatians 5:27

The School Day

School Hours

8:40	First bell rings. Students line up outside.
8:45	Classes begin.
10:30-10:40	Nutrition break. Students eat in classrooms.
10:40-11:05	First recess.
11:05	Classes resume.
12:55-1:05	Nutrition break. Students eat in classroom.
1:05-1:30	Second recess.
1:30	Classes resume.
3:20	Dismissal.



Attendance

If you will be absent for the day, or will arrive late, your mom or dad should phone the school office before the start of school. A message may be left on the answering machine if they call before the office opens.

Promptness

When the first bell rings Grades 6-8 will enter the school quickly and in an orderly manner. Grades 4-5 will line up outside and your teachers will let you in. By the time the second bell rings you are expected to be in your classrooms, ready for class to resume.

Late Slip

If you are late you will need to obtain a late slip from the secretary before going to your classroom. Your teacher will give you instructions as to what to do if you arrive during class devotions.

Balanced School Day

At LCES, we have a balanced school day. Our day is split up into three 110 minute teaching segments. We have two "nutrition breaks"; one is at 10:30-10:40, the other at 12:55-1:05. Students spend this time eating in their classrooms, then enjoy 25 minutes outside with teacher supervision (10:40-11:05, 1:05-1:30).

Leaving School Grounds

Once you have arrived at school in the morning, you may not leave the school grounds at any time. You must have written permission from your own parent if you need to leave the school at recess or noon hour.

THE SCHOOL DAY (Continued)

Staying Indoors

There will be times when all students will be asked to stay indoors for recesses due to bad weather. However, you will be going outdoors for most recesses, so bring appropriate clothing, especially in the winter months. Generally speaking, if you are well enough to be at school, you are well enough to go outside for recess. Again, you must have permission from home or from your teacher to remain indoors for recess or noon hour.

Early Entry in Cold Weather

In cold weather, if you arrive early at school you may wait inside the main entrance double doors. At 8:20 a.m. a bell will ring, and you must go outside and wait for the entry bell at 8:40 a.m.

Yard Supervision

The schoolyard is supervised by a teacher before and after school and during all recesses. You are expected to obey all adults who are on yard duty supervision.

Fire Drills

Fire drills are conducted twice a year (three in the fall, three in the spring). Sometimes these are announced ahead of time, but not always.

School Closing

If it is necessary to send you home during the day, announcements will be made on London radio stations. We will phone all of your parents or the emergency person listed in the office.

PLEASE NOTE: No student will be sent home if telephone contact cannot be made with a parent or emergency contact person.

Snow Days

If school is to be closed for the day, notice will be given on London radio stations or posted on the school website. Bus students will receive a phone call via the parent phone chain.



SCHOOL POLICIES AND PROCEDURES

Introduction



Do you know that the NHL Official Rule Book contains over 1000 rules and policies for playing hockey? That's a lot of rules for a 60-minute game! Why can't the teams just play the game, practice good sportsmanship, and let the best players win? How can one game demand such detailed instructions? It sounds so simple, doesn't it? Yet, the NHL Rule Book regulates everything in hockey from the size and weight of the puck, to official uniforms, equipment worn by players and the rules of play during the game. These regulations are the boundaries for the game.

School is like that, too. It seems so simple. You come to school, go to class, play soccer at recess, eat lunch, return to class and go home. Sounds simple, right? And yet, we know that because of our sinful nature, it isn't so simple after all. We need the guidelines of policies and rules to keep us organized and to help us "play fair". Sometimes it seems that, like the NHL, we have a thousand rules. We don't really have quite that many, but keep in mind that the ones we do have are here to help everyone live in a peaceful and loving environment. Once we know our boundaries, we can learn to let everyone have a place.

This section of the Student Handbook contains some of the policies and rules we expect you to abide by at LCES. The list isn't exhaustive, but these guidelines certainly touch on many parts of your school life.



General Code of Conduct

LCES is a place where students should be able to learn and live in an atmosphere that is safe, happy and secure. God has a place for each one of us at this school. Only when we are willing to put aside our differences and our own wills can we achieve the sense of community that God wishes us to have.

The following items are some guiding principles that will help us to achieve a sense of oneness at the school. Many of these are repeated from page 7 in this handbook, but they are worth repeating here:

- **Respect each other.** Look up to others and do not treat them unkindly in the way you talk to them or in the way you treat them.
- **Speak respectfully to each other.** “ *A gentle answer turns away wrath, but a harsh word stirs up anger.*” (Proverbs 15:1) Swearing or using obscene or inappropriate language, using obscene gestures are displeasing to God and may not be used. If you do, you will be disciplined. Likewise, God’s name is holy, and taking his name in vain will not be tolerated.
- **Love one another.** You can’t always have your way. Set aside your ideas and consider those of others. Look out for those who may not be able to stand up for themselves. Include others in your activities. Invite those with less self-confidence into your game. Pick the poorer players first. Reach out to new students who may not feel at home yet. Use your God-given talents to glorify God and not yourself.
- **Bullying is intolerable.** Don’t do it. If that’s how you need to prove that you are better than someone else, then you have a problem and we will deal with it.
- **Live in peace.** Fighting or physical violence is unacceptable and will result in you being removed from the playground or classroom. Students engaged in fighting or physical violence may be suspended from school. Likewise, gossip is not right. Guard each other’s reputation and character. Sometimes you have to keep your feelings to yourself if it means you will hurt someone with words.



General Code of Conduct (continued)

- *Relationships:* Boys like girls, and girls like boys. This is inevitable sooner or later, and it will happen to you, too! However, public displays of affection such as holding hands or kissing are not acceptable at school.
- *Humour:* Appropriate humour delights everyone; inappropriate humour is not welcome. Humour can also be sarcastic and can cut people down. Cruel teasing and negative comments will not be tolerated. That's part of bullying.
- *Manners:* Manners speak volumes about who you are. Part of a Christian lifestyle is consideration, courtesy and respect for other people. You must display these to all staff, fellow students and all visitors to the school. Every teacher and student expects to be treated in a courteous manner and addressed and referred to by their proper names.
- *Responsible use of school property:* You are expected to respect school property and the property of others. Malicious or intentional destruction of school property and the property of others is serious, and will be dealt with seriously. Accidents happen. If you accidentally damage or break something, report it immediately to your teacher.
- *Play fair:* You know the rules to the game, and everyone else knows that you know the rules. Don't cheat. Be honest, and stick to what is right. It leads to a much more enjoyable lunch hour and allows everyone on your team to enjoy a good game. It also honours God!



Recess

You are expected to go outside during recess periods. It's a time to relax, play some sports, and talk with your friends. When the bell rings for recess, your teacher will excuse you from class. You must go outside quickly and remain outside, unless you have permission from the teacher on yard duty or a note from home.

In order to stay in for recess you will need your teacher's permission. Generally, if you are well enough to be at school, you are well enough to go outside. This becomes a problem mostly in the winter because of the cold, so bring warm clothes! Hats, mittens and snow pants are cool, especially if they keep you warm!

Health Issues

Student Health

If you become ill during the school day, your teacher or the school secretary will call your parents to see if they are able to pick you up. You may not go home without your parent's permission.

Medications at School

The staff is not allowed to administer any medications to students without permission from parents. This includes even Tylenol for a headache. If you take regular medication for a medical condition, your teacher should know about it. Your parents will fill out a form in the beginning of the year that explains any medical conditions for which you may need to take medications. If you have the occasional headache, ask your parents to provide you with the appropriate drug. Do not share medication with other students.



Head Lice (pediculosis)

Head lice are an occasional nasty problem at school. Contracting head lice has nothing to do with cleanliness but can spread as a result of contact with other students at school. We have head lice checks during the year. If lice are detected, you will have to stay at home un-

Homework

Regular Homework

Regular homework is assigned in most classes. The amount depends on the grade level of the students. When you were in Kindergarten to Grade 3 (primary grades), you were expected to do about 15-30 minutes per evening. In the junior grades (Grades 4-5), you can expect approximately 30 minutes of homework a night. At the intermediate levels (Grade 6-8) about 45 minutes to an hour of homework, 4 nights per week can be expected. The amount of homework often depends on how well you work in class. If you find that you have a lot more homework than these guidelines state, perhaps you and your teacher should sit down and have a chat. Homework is generally posted in the *Weekly News*. If you would like to receive the *Weekly News* via email, you may sign up with Mrs. de Boer in the office.

We have developed a *Study Skills Handbook* for students. As well, all students in grades six, seven and eight receive a daily planner at the beginning of the year. We expect you to use this planner to record your homework and projects.

Homework and Absences

If you are absent from school, you are responsible for making up missed work. This means that you need to talk to your teacher as soon as you return to ask about missed work. Better yet, call a friend or ask someone to be your homework partner. If you know in advance that you will be absent, it is your responsibility to let your teacher know that you will be gone from class.

Dress Code

Student Dress Code

The dress code for students goes by the following guidelines, and applies to students in Junior Kindergarten through Grade 8:

- School clothing should be neat, clean, modest and in good taste, and appropriate for the weather.
- Shorts and skirts should be of an appropriate length and fit.
- Very low cut pants are not appropriate dress for school and may not be worn.
- Tops and T-shirts should be modest and T-shirt slogans must demonstrate good taste, reflecting a positive message. For example, beer slogans, slogans with negative comments are not in harmony with school beliefs. Slogans on the bum of clothing are not permitted, or in other inappropriate places.
- Bare midriffs are not allowed. The rule is that your top and bottom must meet when your hands are raised.
- Undergarments may not be showing at any time.
- Tank tops may not have narrow straps. The straps should be no thinner than approximately 3 finger widths.
- Heavy make-up is not to be worn.
- Hats may be worn to school, but may not be worn in school during class time.
- Outside wear must be removed before class. Bring a sweater to wear in class if you tend to get chilly.
- Indoor shoes must be worn at all times in school, properly laced up or fastened, and stored at school. They are not to be worn outdoors during recess.
- Separate Phys. Ed. clothes must be worn from Grades 3 through Grade 8.

Your teacher and/or the principal will make a judgment call about your clothing. If you are found to be wearing clothes that do not follow the above guidelines, you may be sent home to change, or you will be given clothes to change into at school.

Gym Clothes

You are required to wear suitable clothing for gym classes - either a T-shirt and shorts or tracksuit. Gym clothes can be kept in a tote or gym bag that may be left at school. Please take them home regularly to wash them.



Transportation

If you arrive and leave by car:

If your parents drop you off in the parking lot, please keep this in mind:

- Be on the lookout for other cars. Do not just run through the parking lot to greet your waiting friends.
- Walk along the side of the parking lot, where there are fewer cars.
- When you see your ride coming, do not run out to greet them. Wait for the car to come to a stop and then walk on the side of the parking lot.



If you arrive and leave by bike, roller blades or skateboards:

- If you ride your bike to and from school you must dismount and mount your bike at Clarke Road and walk it over the parking lot to the bike racks., following the sidewalk around the parking lot.
- Bikes must be locked to prevent theft. You are strongly encouraged to wear helmets. It's the law!
 - The mounting and dismounting of roller blades and skateboards is the same as for bikes. You may not ride them over the parking lot. Roller blades and skateboards must be brought in to the school when the bell rings, and may not be used during school hours.



If you arrive and leave by bus:

Buses will stop in our parking lot to drop off and pick up students. If you are a regular bus rider, your driver will give you specific instructions with regard to bus behaviour and expectations. Here are some general guidelines:

- In the morning, buses will be dropping students off next to the sidewalk on the north side of the school. Walk along the sidewalk until you reach the play area before running.
- At the end of the school day, you are to line up in the designated spot for your bus. You are to wait there until your driver gives you permission to get on the bus.
- You must stay on the school side of the driveway to Royal View Church. You are not allowed to play, walk, climb on snow banks on the other side.
- Your friends must have written permission from a parent to ride home with you on the bus. You may not just invite them to come with you. Some of the buses



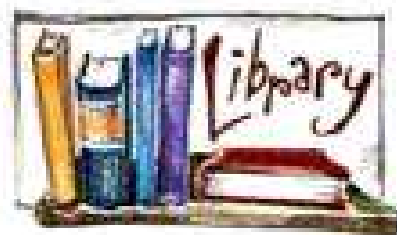
Events and Places

Chapels and Assemblies

Chapels are held every Monday morning in the gym. They may include singing, prayer, praise, special music, speakers, student participation or perhaps an audiovisual presentation. Chapels last approximately 20 minutes. This is a time when we can worship God as a school family, and when announcements can be made to the entire student body.

Assemblies are held whenever the occasion occurs that a special speaker or perhaps a musical group is willing to come and share with the school community, or to open and close the school year.

During all chapels and assemblies you are expected to be courteous and attentive listeners and to participate where required. You will enter and sit with your class in assigned areas.



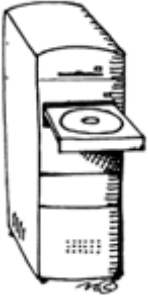
Library

The library is open to students. Books are loaned for a two-week period and it is important that books are returned on time. Books must be checked out with the library volunteers, and must never be taken out of the library without being checked out. Fines may be charged for late books and students will be asked to reimburse the school for lost books. If you abuse this checkout process, you will lose your library privileges.

RULES, RULES AND MORE RULES

EVENTS AND PLACES (CONTINUED)

Computer Lab/ Computer Equipment



We have been blessed with up-to-date computer equipment with Internet access in both the classrooms and the computer lab. Your teacher will schedule your class once or twice a week to use the computer lab, and you may have sign-up schedules for your classroom computers.

At the beginning of the year your teacher will give you a new disk if you need it. Please put your full name and grade on the disk label, so that if your disk is lost it can be returned to you. You may use the Internet, but only after you and your parents have signed the LCES Internet Acceptable Use Policy.

Use of personal computer games is not allowed. You are also not allowed to install any software on the computers throughout the school.

You are responsible for respecting the equipment and organization of the computer lab and all computers at LCES. Any abuse of the equipment or procedures will result in you being unable to use the lab for a period of time or even permanently.

Hallways

Because we are so crowded at LCES, the hallways often become extensions of the classrooms for group work or activities such as play practices or reading aloud. If your teacher allows you to work in the hallway during class time you are expected to work quietly with your partner or group. Any adult who sees that a group is not on task will ask all of you to return to your classroom and will talk to your teacher.

RULES, RULES AND MORE RULES

Miscellaneous

Lost and Found

If you are missing an item of clothing or a lunch kit, etc. you should check the lost and found box as soon as possible. At the end of every month, anything not claimed will be donated to My Neighbour's Closet, our school's thrift store. You may have to buy back your own clothes!

Textbooks

The school supplies all textbooks for students; however, you are expected to take good care of them during the year. Your teacher will assign you a number that corresponds with your textbooks to help you keep track of your books. It is your responsibility to keep track of all your textbooks.

Gum

Gum is delicious, sweet, gooey and fun to chew. Unfortunately, it also leaves a mess when stuck on chairs, bottoms of desks or dropped on the floor. Therefore, gum chewing is not allowed at school, except on special days.

School Supplies

Last June you were given a list of what you would need to bring for school supplies. If you need another list, please ask in the office.

School Pictures

School pictures (individual and class pictures) are taken each fall. Every student will receive a free class picture, and, for a moderate fee, you will be able to choose from a variety of packages for your individual pictures.



School Visitors

We discourage you from bringing friends from other schools during the school day. Often a friend gets bored while you are hard at work on your assignments, and this may cause a disruption for the rest of the class. Still, at times there could be exceptions. You will need permission from your teacher and the principal, and have a written note from home at least one day in advance of the visit.

Miscellaneous (continued)

Weapons

Obviously, you are not allowed to bring weapons to school or any school related activity. However, weapons include any kind of knife (including Swiss army knife or other pocket knife), martial arts devices, cigarette lighters, or any other object that may look like a weapon. If you are found to possess any of these, they will be taken from you and not returned, and serious disciplinary action will result.

Use of Telephone by Students

The student telephone is available to you in the office, but only for emergency purposes. You will need to ask your teacher for permission each time. The use of the phone is not meant for social arrangements after school with your friends. Be sure to ask Mrs. de Boer politely in the office if it is ok to use the phone.

Electronic Devices

Walkman radios and electronic games, such as Game Boys may not be brought to school. They are expensive and easily lost, broken or taken.

You do not need a cell phone, pager or beeper at school, so please leave them at home. Save them for your workplace later in your life.

Snow and Ice Balls

We shouldn't need to mention this, but we will anyway. You may not throw snowballs or ice balls at LCES. Not before, not during, not after school. Make a snow fort instead, or play snow soccer!

Birthday Parties

Birthday parties are great fun and joyful occasions... if you're invited. They can also leave some students feeling left out and lonely when they aren't included in the party plans. If you are having a party, please use the following guideline:

- If the entire class or all the boys or all the girls are invited, then you are free to hand out invitations at school. If the party is only for a few select friends, please do not distribute invitations at school, and, don't "talk it up" at school.



Reporting Student Progress

Student Report Cards

The school year is divided into three terms. A progress report is sent home at the end of each term—November, March and June. You are graded for achievement, quality of effort, and class participation. Anecdotal comments help to give a more complete picture of a student's progress.



Parent-Teacher Interviews

At LCES we believe that good communication between the home and school is vital to your educational development. Formal interviews are scheduled twice a year, after the first and second reports are sent home. We urge your parents to attend these interviews. As well, your parents can request to meet with the teacher at any time during the year. A teacher may also request a meeting with your parents.

Academic Testing for Students

The school conducts formal testing of all students in grades 3-8. The Canadian Test of Basic Skills (CTBS) is administered to all students in alternating years at these grade levels. These tests will be administered at the end of October this year. The purpose of these tests is to ensure that you are receiving basic instruction in language arts, mathematics and cognitive reasoning skills, as well as to obtain a general indication of how students at LCES compare academically with students in other Ontario Alliance of Christian Schools and other students throughout Canada. The results of these tests are available to your parents and are kept in your files in the office.

London Christian Staff

The staff at LCES is highly dedicated and qualified. They care very much about you and want the best for you. They are here to lead you in your education and help you meet the challenges of school life.

TEACHERS

Ms. Fraser—Junior Kindergarten
Ms. Lise-Senior Kindergarten
Ms. Laarman-Grade 1
Ms. Wassink-Co-teacher in Grade 2
Ms. Groot-Nibbelink—Co-teacher in Grade 2
Ms. Wildschut– Co-teacher in Grade 3, Vice-Principal
Mr. Stahle-Grade 4
Mrs. Minnesma- Grade 5
Ms. Vandendool-Grade 6
Mr. Hosmar-Grade 7
Ms. VanHarten-Grade 8
Ms. Holtrop-Resource
Ms. Timmerman– Co-teacher in Grade 3, Music, Band
Ms. Rowaan– French

SUPPORT STAFF

Ms. Speerstra-Administrative Assistant

Ms. Bruinsma– Educational Assistant
Ms. Dykstra-Educational Assistant
Ms. Frankruyter-Educational Assistant
Ms. Mills-Educational Assistant
Ms. Moniz—Educational Assistant

Ms. Bekkers-Bus driver
Ms. Knapper-Bus driver
Mr. Rice-Bus Driver
Ms. Scheele-Bus driver

Ms. Heida, Mr. Heida-Custodians
Mr. Oudman-Transportation Coordinator
Ms. Talsma-Tuition Coordinator & Bookkeeper



PRINCIPAL

Ms. Haven

Notes

